

# DETROIT DIESEL



## Installation Instructions

### 18SP593 – MBE 4000 Warranty Long Block Assembly Engine Serial Number Application

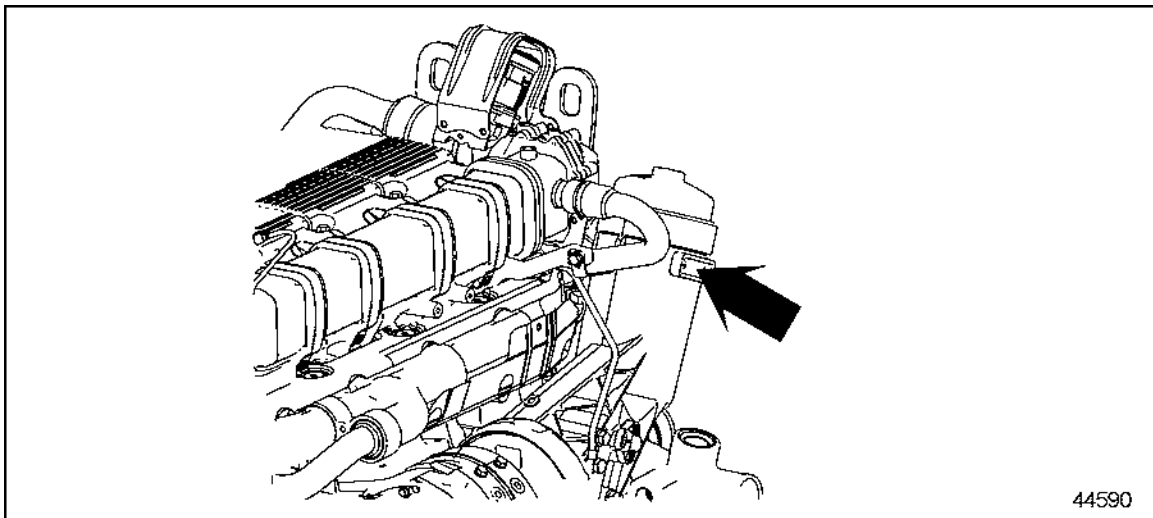
#### Introduction

MBE 4000 Warranty Long Blocks are identified with a Detroit Diesel Corporation® Remanufacturing serial number tag affixed to the engine oil filter housing on the right side of the engine. See Figure 1.

This tag will contain the Warranty Long Block Part Number and Warranty Long Block Serial Number (for example):

**P/N: R23534281W**

**S/N: 460.000 R3 123457**

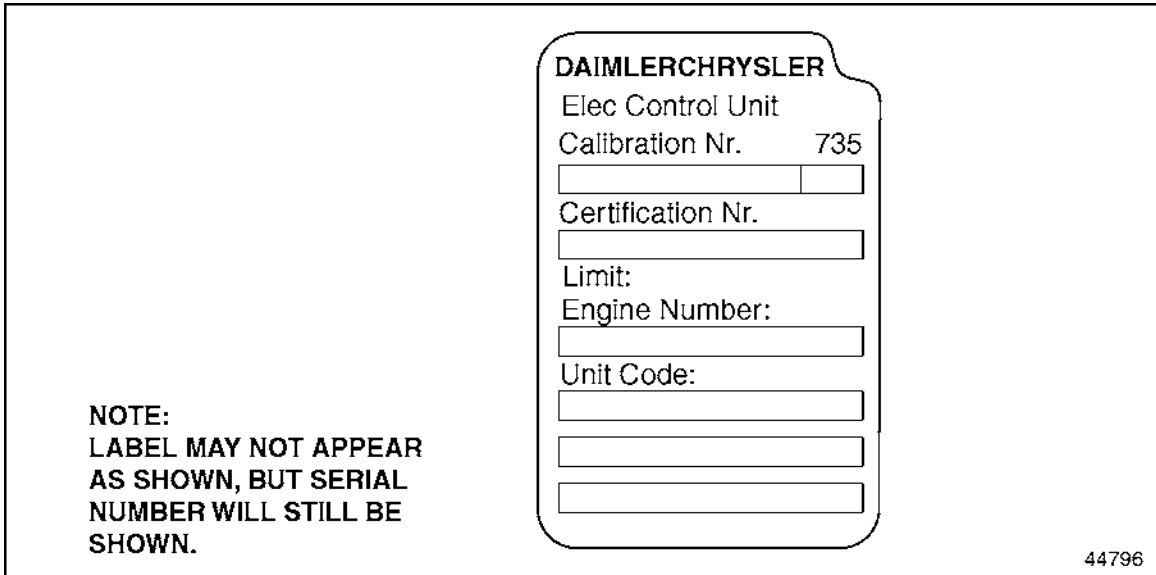


**Figure 1 Remanufacturing Serial Number Tag Location**

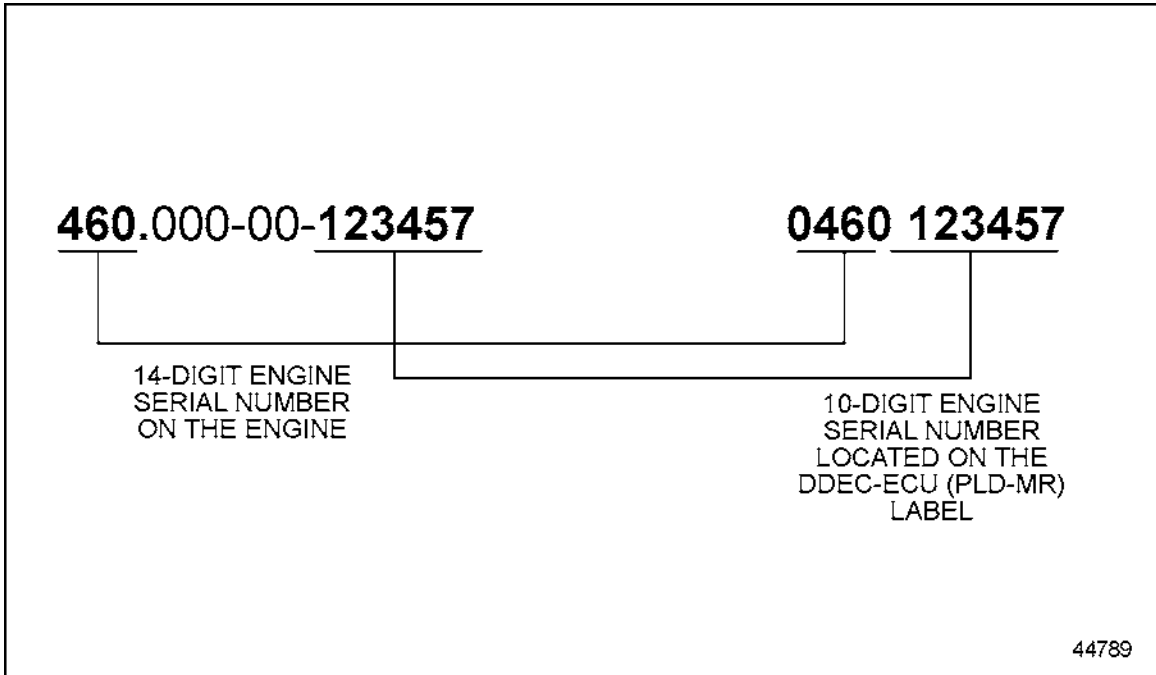
For future Warranty document identification, use this Warranty Long Block Serial Number.

#### Service and Replacement Parts Engine Identification

In addition to the warranty long block fourteen-digit serial number on the oil filter housing tag, there is an optional engine ten-digit serial number used for service and service parts that is found on the DDEC-ECU (PLD-MR) label located on the DDEC-ECU (PLD-MR) on the left side of the engine. See the example in Figure 2. The ten-digit number is derived from the original fourteen-digit engine serial number. See example in Figure 3.



**Figure 2 Example of DDEC-ECU (PLD-MR) Label**



**Figure 3 Example of Ten-Digit Engine Serial Number**

**DETROIT DIESEL**



13400 Outer Drive, West, Detroit, Michigan 48239-4001  
 Telephone: 313-592-5000  
 www.detroitdiesel.com

Copyright© 2004 Detroit Diesel Corporation. Detroit Diesel®, DDC®, and the spinning arrows design are registered trademarks of Detroit Diesel Corporation. Reliabliti is a registered trademark of Detroit Diesel Corporation. All other trademarks are the property of their respective owners.

**18SP593 0408 As technical advances continue, specifications will change. All rights reserved. Printed in U.S.A.**