



DETROITTM
DEMAND PERFORMANCESM

18SP692 – Series 50G Knock Sensor Replacement Kit (P/N: 23539444)

KIT DESCRIPTION

Service kit (P/N: 23539444) includes all necessary parts to replace the knock sensor on Series 50 Natural Gas applications.

The knock sensor is mounted in the cylinder head or in the left side of the cylinder block.

KIT CONTENTS

The kit contains the following components:

Part Number	Quantity	Description
23539428	1	Knock Sensor Pigtail Kit
23539443	1	Knock Sensor
18SP692	1	Installation Instructions

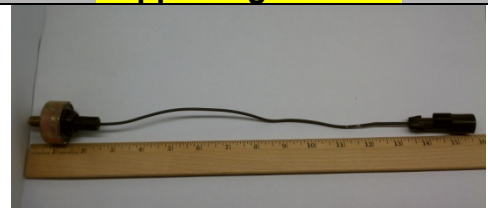
REPAIR PROCEDURE

1. Apply the parking brake, chock the wheels, and perform any other applicable safety steps.
2. Disconnect the main batteries at the negative terminals.
3. Disconnect the knock sensor connector from the engine sensor harness.
4. Remove the sensor.

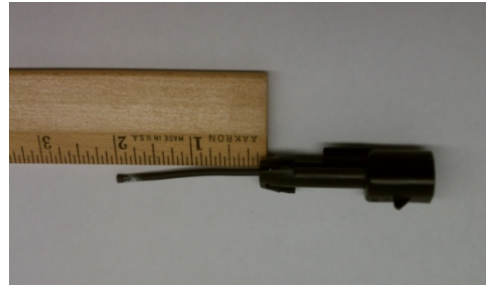
Instruction

5. Measure and record the knock sensor pigtail length.

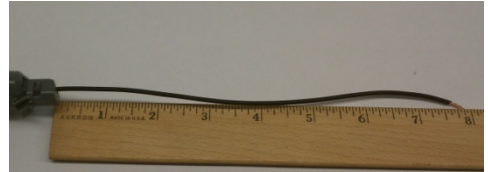
Supporting Pictures



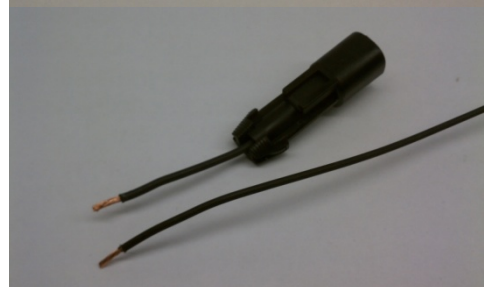
6. Cut off the knock sensor harness connector from the old knock sensor pigtail harness at two inches from the connector base.



7. Cut the pigtail on the new knock sensor to eight inches from the sensor.



8. Remove approximately ¼ inch of insulation from the end of the new knock sensor pigtail and from the end of the connector wires.



9. Cut the wire loom to the correct lengths, leaving ½ inch of wire exposed for crimping the crimp splice connector.



10. Slide the wire loom over each wire and install the weather seal at each end.

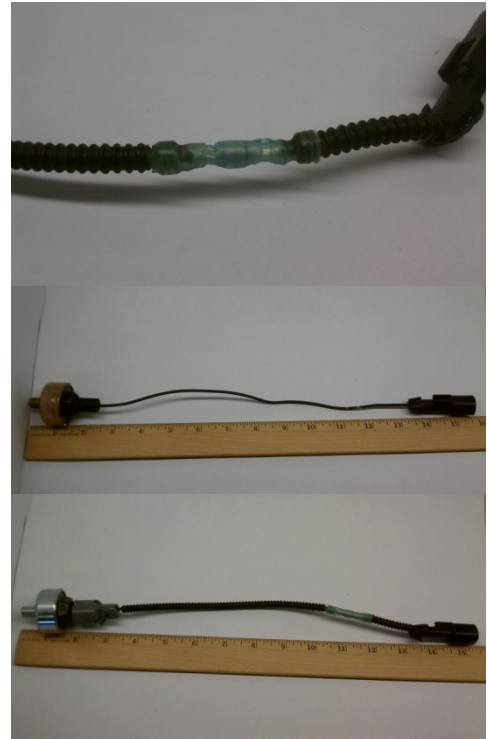


11. Crimp both ends of the splice.



12. Heat shrink the ends of the crimp splice.

13. The new sensor pigtail should be the same length as the original.



Installation of the knock sensor

1. Install the sensor in the boss and torque to 17-21 N·m (2.5-3.0 lb·ft).
2. Connect the knock sensor pigtail to the sensor wiring harness connector.



13400 Outer Drive, West, Detroit, Michigan 48239-4001
Telephone: 313-592-5000
www.detroitdiesel.com

Specifications are subject to change without notice. Detroit Diesel Corporation is registered to ISO 9001:2001.
Copyright © 2012 Detroit Diesel Corporation. All rights reserved. Detroit Diesel Corporation is a Daimler company.

18SP692 1212 As technical advances continue, specifications will change. Printed in U.S.A.